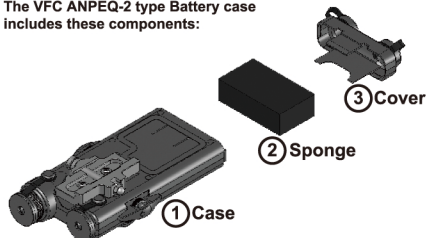




## VFC ANPEQ-2 TYPE Battery Case Instruction Manual

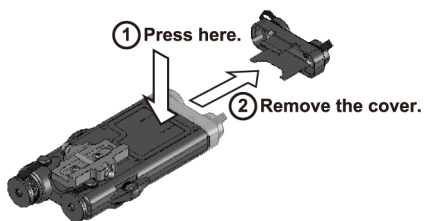
The VFC ANPEQ-2 type Battery case includes these components:



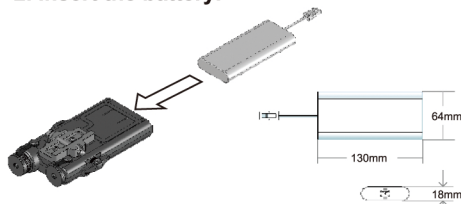
### FEATURES

Realistic as Real.  
High class industrial plastic material.  
Support Hi-capacity battery.  
Used on any airsoft gun with a rail system and front mounted battery adapter.

#### 1. Open the battery box.

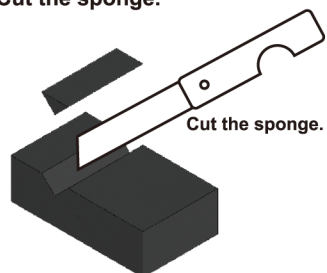


#### 2. Insert the battery.

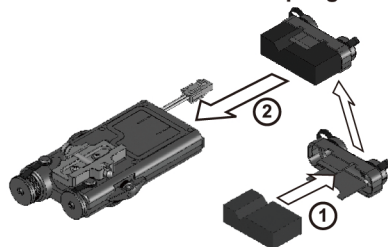


The maximum of battery dimensions: L130xW64xH18mm

#### 3. Cut the sponge.



#### 4. Assemble the cover and sponge.



#### 5. Setup complete.



**Warning:**  
Pressing this dummy switch  
too much may damage it.



**Completion**



<http://www.gb-tech.com.tw>

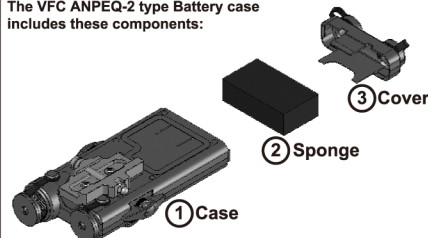
**Caution:** THIS IS NOT A REAL LASER POINTER.

Warning: This product is designed for airsoft sports, static display, movie or stage use. Unable to modify.



## VFC ANPEQ-2 TYPE Battery Case Instruction Manual

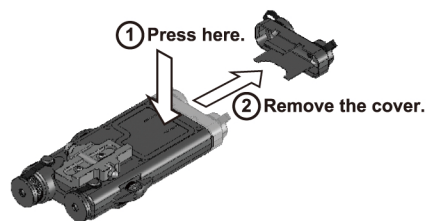
The VFC ANPEQ-2 type Battery case includes these components:



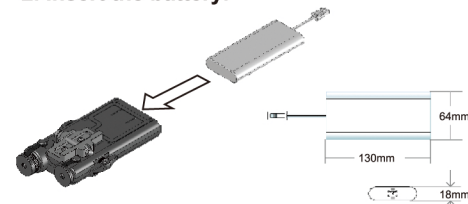
### FEATURES

Realistic as Real.  
High class industrial plastic material.  
Support Hi-capacity battery.  
Used on any airsoft gun with a rail system and front mounted battery adapter.

#### 1. Open the battery box.

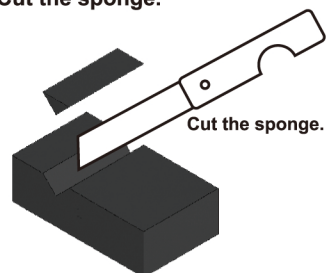


#### 2. Insert the battery.

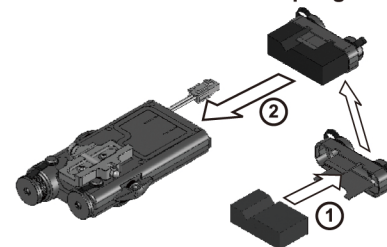


The maximum of battery dimensions: L130xW64xH18mm

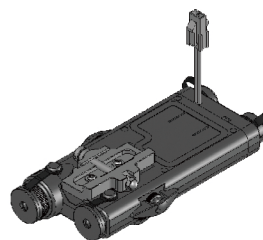
#### 3. Cut the sponge.



#### 4. Assemble the cover and sponge.



#### 5. Setup complete.



**Warning:**  
Pressing this dummy switch  
too much may damage it.



**Completion**



<http://www.gb-tech.com.tw>

**Caution:** THIS IS NOT A REAL LASER POINTER.

Warning: This product is designed for airsoft sports, static display, movie or stage use. Unable to modify.